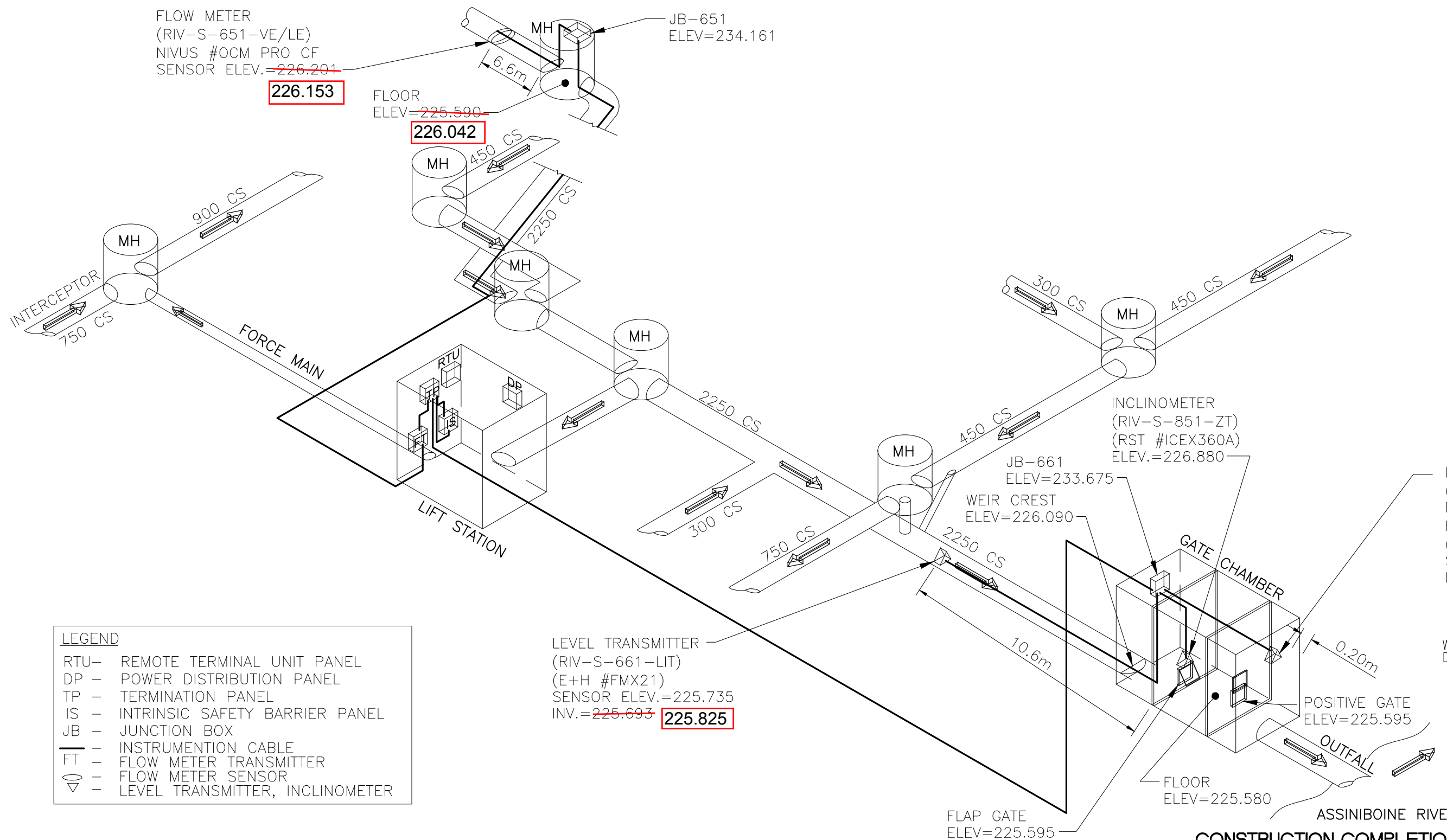


FLOW METER
(RIV-S-651-VE/LE)
NIVUS #OCM PRO CF
SENSOR ELEV.=~~226.201~~

226.153

FLOOR
ELEV.=~~225.590~~
226.042

JB-651
ELEV=234.161



LEGEND

- RTU- REMOTE TERMINAL UNIT PANEL
- DP - POWER DISTRIBUTION PANEL
- TP - TERMINATION PANEL
- IS - INTRINSIC SAFETY BARRIER PANEL
- JB - JUNCTION BOX
- — INSTRUMENTATION CABLE
- FT — FLOW METER TRANSMITTER
- — FLOW METER SENSOR
- ▽ — LEVEL TRANSMITTER, INCLINOMETER

LEVEL TRANSMITTER
(RIV-S-661-LIT)
(E+H #FMX21)
SENSOR ELEV.=225.735
INV.=~~225.693~~ **225.825**

INCLINOMETER
(RIV-S-851-ZT)
(RST #ICEX360A)
ELEV.=226.880

JB-661
ELEV=233.675
WEIR CREST
ELEV=226.090

LEVEL TRANSMITTER
(RIV-S-951-LIT
FIELD TAGGED AS
RIV-S-751-LIT)
(SIEMENS #LR200)
SENSOR ELEV.=231.350
INV.=~~225.580~~ **225.366**

METRIC

WHOLE NUMBERS INDICATE MILLIMETRES
DECIMALIZED NUMBERS INDICATE METRES



CONSTRUCTION COMPLETION DATE - FEBRUARY 2013

LOCATION APPROVED UNDERGROUND STRUCTURES

| SUPV. U/G STRUCTURES COMMITTEE | DATE |
|--------------------------------|------|
| | |

NOTE:
LOCATION OF UNDERGROUND STRUCTURES AS SHOWN ARE BASED ON THE BEST INFORMATION AVAILABLE BUT NO GUARANTEE IS GIVEN THAT ALL EXISTING UTILITIES ARE SHOWN OR THAT THE GIVEN LOCATIONS ARE EXACT. CONFIRMATION OF EXISTENCE AND EXACT LOCATION OF ALL SERVICES MUST BE OBTAINED FROM THE INDIVIDUAL UTILITIES BEFORE PROCEEDING WITH CONSTRUCTION.

| B.M. ELEV. | | | |
|------------|--------------------------|----------|------|
| | | | |
| E | REVISED AS-BUILT DRAWING | 13.07.24 | S.T. |
| D | AS-BUILT DRAWING | 13.05.31 | S.T. |
| C | ISSUED FOR CLIENT REVIEW | 13.04.15 | J.C. |
| B | ISSUED FOR CLIENT REVIEW | 13.03.21 | J.C. |
| A | ISSUED FOR CLIENT REVIEW | 12.07.13 | J.C. |
| NO. | REVISIONS | DATE | BY |

Stantec Consulting Ltd.
905 Waverley Street, Winnipeg, Manitoba
Tel 204-489-5900 Fax 204-453-9012

| | | | |
|-------------|--------|----------------------------|------------|
| DESIGNED BY | S.T. | CHECKED BY | J.C. |
| DRAWN BY | R.J.H. | APPROVED BY | J.C. |
| HOR. SCALE: | N.T.S. | RELEASED FOR CONSTRUCTION: | |
| VERTICAL: | | DATE | 2012.06.06 |

ENGINEER'S SEAL
PROVINCE OF MANITOBA
S. TREBIC
REGISTERED PROFESSIONAL ENGINEER
MEMBER 21332
CONSULTANT DRAWING NO.
E-2301

THE CITY OF WINNIPEG
WATER AND WASTE DEPARTMENT

Winnipeg

CSO OUTFALL MONITORING
RIVERBEND
3D ISOMETRIC PLAN

| | |
|--|----|
| SHEET | OF |
| 1 | 2 |
| CAD FILE DRAWING NUMBER I3650e-2301-riv.dwg | |
| CITY DRAWING NUMBER I-0188-A-A0202-001-00 | |

\\CD1201-F02\work_group\1112\active\111213650\0300_drawing\305_record\sheet_files\electrical\Riverbend\13650e-2301-riv.dwg
 2013/08/22 10:24 AM By: Betker, Kyle